

[Home](#)[About Us](#)[Publication](#)[Tools](#)[Project](#)[Guideline](#)[Workshop](#)[Data Search](#)

WEFA

LDFS

Tool Desc Web browser Analysis Tool
 Using Env Windows NT higher than Internet Explorer 5.0
 Contact one01h@korea.ac.kr

CLDFS

Updated version 1.3.7
 Download [WEFA 1.3.7 \(Freeware\)](#)

REGA

Hash(SHA1) 7b88492f8628bf60bcfb09ebd7e5f493faa08247

WEFA(Web Browser Analysis Tool)

WEFA

WEFA is the forensic tool performing collection and analysis of the windows web browser(GUI application).

Supported platforms

JPEGViewer

Windows(written in C/C++ and MFC)

Supported Language

P.F.P

Korean, English

Supported Browsers

LNK Parser

Internet Explorer(~11)

Mozilla Firefox

Apple Safari

Volafox

Opera

Chromium

Google Chrome

Google Chrome Canary

Comodo Dragon

CoolNovo(ChromePlus)

Swing Browser

Functions

- Acquisition targets

- Active System
- Mounted volume

- Acquire Web browser artifacts

- Cache
- Cookies
- History
- Download File List
- Local File Open
- Session
- Temporary Internet File

- TimeLine

- Visually timeline

- Various viewers

- URL Parameter Viewer
- HTML Viewer
- TimeLine Viewer

- Keyword search

- Search by keyword
- Search by date
- Search by regular expression

- Report

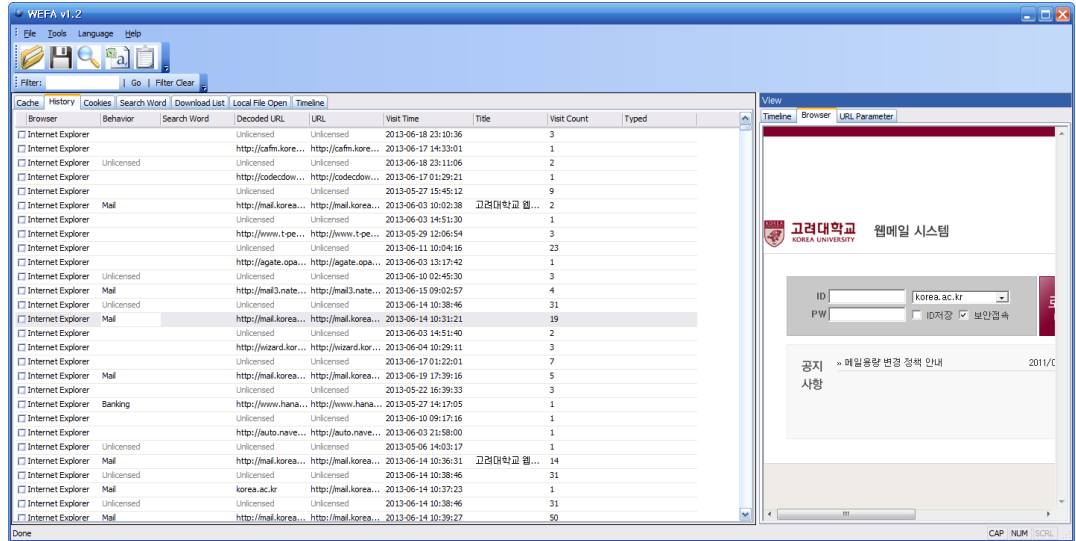
- Create result reports(CSV Format)

- Recovery Deleted Files

- Index.dat Carving

- Analysis of user behavior

- Decoded URL
- Search History
- User behavior classification (Search, Mail, SNS, Blogging, Cloud, Map, Insurance, Community, Weather, News, Bank, Shopping, Multimedia, User Defined, Unclassified)



Center for information Security Technologies. Anam-dong 5-ga Seongbu-gu, Seoul, Korea. / TEL +82-2-3290-4738 / FAX +82-2-928-9109
COPYRIGHT. 2013 Digital Forensic Research Center in KOREA UNIV. All right Reserved. forensic@cist.korea.ac.kr